

# CaptivATE<sup>©</sup> 3.3

## Automation Software

*Fully Automated Electrical Safety Testing*

### Introduction

CaptivATE<sup>©</sup> provides an **industry first Off-The-Shelf Electrical Safety Test Solution** for accurately performing hipot, leakage current and functional tests. Testing is made simple and fast by automatically downloading the test setup, conducting the required measurements and outputting the test results. CaptivATE automates the process of electrical safety testing when used with QuadTech's Guardian 1000 Series, 6000 Plus, 6100 Plus, Hybrid 2000, Matrix 8000 instruments and 1730T.

### Description

**Testing Capability:** Using the CaptivATE software and a Guardian 6100 Plus Safety Analyzer, possible test functions include: AC or DC Hipot, insulation resistance, ground bond, earth leakage, patient leakage, patient auxiliary leakage or enclosure current leakage, as well as a functional check.

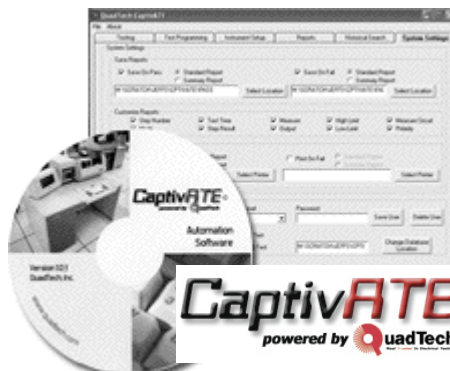
**Automatic Loading Test Setup:** The test setup can be loaded and verified by using a bar code scanner to identify both the product model and serial number(s). This reduces the possibility of an operator selecting the incorrect test for the product.

**Increased Productivity:** All the electrical safety and functional testing can be combined into one test system, thus eliminating the need for multiple setups and test stations. The intuitive graphic interface is easy and efficient for the test operator, reducing operator error.

**Plant-Wide Implementation:** Multiple installations of CaptivATE (plant-wide or globally) can share the same database, providing a central data location that is updated in real-time. A single installation license is required for each test system. Unlimited installation for viewing data, programming tests and searching results.

**Paperless Testing:** Saves and prints all measurement results as well as product model number, serial number, time and date, test operator, test instrument used and test name. Prints and electronically stores product test certificates.

**Password Protection:** CaptivATE provides three levels of accessibility (operator, engineer and administrator), providing control of specific functions within the testing process.



*For more detailed information on specifications, pricing and special purchase, rent and lease options, contact us at:*

**[www.quadtech.com](http://www.quadtech.com)**

**800-253-1230**

Hipot Testers • LCR Meters • Cable Testers  
• AC/DC Programmable Power Sources •  
Megohmmeters • Milliohmmeters

### USES:

- Automated Production Testing
- Automated Assembly Line
- Quality Assurance Testing & Statistical Process Control
- Research or Laboratory Analysis
- Historical Database Archiving

### FEATURES:

- Self Executable Install
- Local or Shared Network Database
- Three Levels of Accessibility - Password Verification
- Intuitive Interface: Virtual Front Panel and Windows
- Virtually Unlimited Number of Tests - Up to 990 Steps Each
- Local or Remote Printing
- Test Device Setup with Serial Number Logging
- Automatically Load Tests at Beginning of Each Test
- Automatically Verify Test Program at Beginning of Each Test
- Historical Database Search
- Archived Test Report Search
- Separate Options for Saving and Printing Pass & Fail Reports
- Standard & Summary Reports in MS Word or in XML and CSV Formats
- Batch Testing & Reports
- Create Aliases for Generic Modes
- Engineering Notation
- Text Fields for Operator Comments on Test Failures, Functional Check, and Virtual Pause
- Numeric Functional Check
- Document Retrieval

## CaptivATE

### Operating System(s):

Microsoft Windows XP Professional

### Minimum Software Requirements:

Microsoft Office 2003 or 2007

### Minimum Hardware Requirements:

PC: 300MHz Intel Pentium (or compatible) Processor  
 128MB RAM  
 2GB Hard Disk Space  
 (Includes hard disk space required for program files only, Additional hard disk space required for database)  
 CD-ROM or DVD Drive  
 Microsoft Windows compatible keyboard  
 Microsoft Windows compatible mouse or pointing device  
 Microsoft Windows compatible printer  
 Super VGA Monitor with 800x600 Resolution or higher  
 1 x RS232 Port \*  
 4 x USB or USB 2.0 Ports for instrument connection

\* Additional RS232 ports can be substituted for 2 USB ports

### Optional Requirements:

Microsoft Windows compatible network  
 Windows compatible printer capable of 8.5"x11" or 2"x3" media  
 Microsoft Access 98 or greater

### Optional Equipment:

Barcode Scanner

### Instruments Supported:

#### Guardian 6000

Firmware 1.08 (or higher)  
 RS232 installed (G26)  
 Scanners:(3 Total)  
 1 INT Scanner: 6000-01, -02 or -03 (Optional)  
 2 EXT Scanners: 5000-01, -02, -03 or -04 (Optional)

#### Guardian 6100

Firmware 1.08 (or higher)  
 RS232 installed (G26)  
 Scanners:(3 Total)  
 1 INT Scanner: 6000-05 (Standard)  
 2 EXT Scanners: 5000-01, -02, -03 or -04 (Optional)

#### Guardian 6200

Firmware 1.08 (or higher)  
 RS232 installed (G26)  
 Scanners:(3Total)  
 1 INT Scanner: 6000-04 (Standard)  
 2 EXT Scanners: 5000-01, -02, -03 or -04 (Optional)

#### 1730T

Firmware 2.0 (or higher)

#### Guardian 6000 Plus

Firmware 5.13 (or higher)  
 Scanners: (4 Total)  
 1 INT Scanner: 6000-01, -02 or -03 (Optional)  
 3 EXT Scanner: 5000-01, -02, -03 or -04 (Optional)  
 G45 40A GB Transformer (Optional)

#### Guardian 6100 Plus

Firmware 5.13 (or higher)  
 Scanners: (5 Total)  
 1 INT Scanner: 6000-07 (Standard)  
 4 EXT Scanners: 5000-01, -02, -03 or -04  
 G45 40A GB Transformer (Optional)

#### AC Source

6408-1: 800VA AC Source  
 61603: 1500VA AC Source  
 61604: 2000VA AC Source  
 61605: 4000VA AC Source

#### Guardian 1010, 1030 & 1030S Hipot Testers

Firmware 4.30 (or higher)

#### Guardian 1050 Ground Bond Tester

Firmware 1.00 (or higher)  
 RS232 installed (G36)

#### Hybrid 2000 AC/DC/IR/DCR Safety Analyzer

Firmware 1.14 (or higher)

#### Matrix 8000 Scanning System

AC Line Module  
 GBF-2 Module  
 Earth Module  
 AC Line 2 Module  
 General Module  
 Switch

#### CaptivATE-- NEW Features for VER. 3.3

Retain memory locations and offsets  
 Idle logoff  
 Auto serialization  
 Output data in XML format  
 Support for Chroma 61605  
 Support for 1730T LCR meter  
 Support for NI USB 6525  
 Enhanced password (optional)  
 Document retrieval

## Ordering Information

### CaptivATE 3.3 Automation Software

#### Includes:

<u>P/N</u>	<u>Description</u>
CaptivATE 3.3 150889	Windows XP Single Installation Instruction Manual

#### Optional Accessories:

<u>P/N</u>	<u>Description</u>
CaptivATE 5 150912	Single Installation License 5-pack IQ/OQ Protocol for CaptivATE 3.3



For more detailed information on specifications, pricing and special purchase, rent and lease options, contact us at:

[www.quadtech.com](http://www.quadtech.com) or 800-253-1230

P/N 030163/A2